

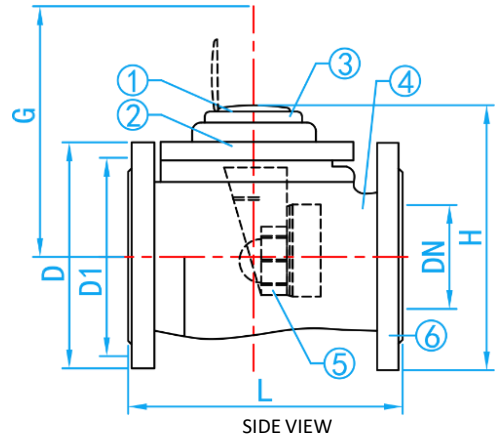
# EPOXY-COATED DUCTILE IRON WOLTMAN DRY DIAL COLD WATER METER (R80)



COMPLY WITH ISO 4064: 2014



- 1.Colour ---Grey.
- 2.Information on the lid—
  - (a) Water meter usage monitoring purpose
  - (b) Date of installation and
  - (c) Remark.



SIDE VIEW

**COMPONENT PARTS**

ITEM	PARTS	MATERIAL
1	Lid	Plastic
2	Sealed Register	ABS
3	Sealing Ring	Plastic
4	Body	Epoxy-coated Ductile Iron
5	Impeller	Plastic
6	Flange	Epoxy-coated Ductile Iron

**STANDARD SPECIFICATIONS**

Water Temperature	0 - 30°C
Operating Pressure	≤ 1.6Mpa
Accuracy Class / Performance ratio (R)	R80

**FLOW RATE SPECIFICATIONS**

SKU	R [Q <sub>3</sub> / Q <sub>1</sub> ]		Q <sub>1</sub> Minimum flow rate [m <sup>3</sup> /h]	Q <sub>2</sub> Transitional flow rate [m <sup>3</sup> /h]	Q <sub>3</sub> Nominal flow rate [m <sup>3</sup> /h]	Q <sub>4</sub> Maximum flow rate [m <sup>3</sup> /h]
	Horizontal	Vertical				
WMN065F-WP	R80	R50	0.7875	1.26	63	78.75
WMN080F-WP			0.7875	1.26	63	78.75
WMN100F-WP			1.2500	2.00	100	125.00
WMN150F-WP			3.1250	5.00	250	312.50
WMN200F-WP			5.0000	8.00	400	500.00
WMN250F-WP			7.8750	12.60	630	787.50
WMN300F-WP			12.5000	20.00	1,000	1250.00
WMN350F-WP			12.5000	20.00	1,000	1250.00
WMN400F-WP			20.0000	32.00	1,600	2000.00
WMN500F-WP			31.2500	50.00	2,500	3125.00

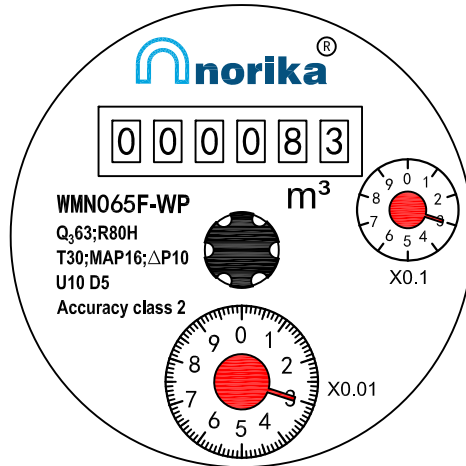
**DIMENSIONS**

SKU	DN (mm)	L (mm)	H (mm)	G (mm)	CONNECTING FLANGE		WEIGHT (kg)	PCS/CTN
					D	D1		
WMN065F-WP	65	200	262	360	185	145	13.00	1
WMN080F-WP	80	225	272	360	200	160	14.40	1
WMN100F-WP	100	250	282	360	220	180	15.36	1
WMN150F-WP	150	300	341	420	285	240	32.76	1
WMN200F-WP	200	350	370	500	340	295	42.10	1
WMN250F-WP	250	450	480	710	405	355	108.00	1
WMN300F-WP	300	500	516	730	460	410	128.00	1
WMN350F-WP	350	500	560	730	520	470	137.00	1
WMN400F-WP	400	600	647	830	580	525	213.00	1
WMN500F-WP	500	800	785	930	715	650	340.00	1

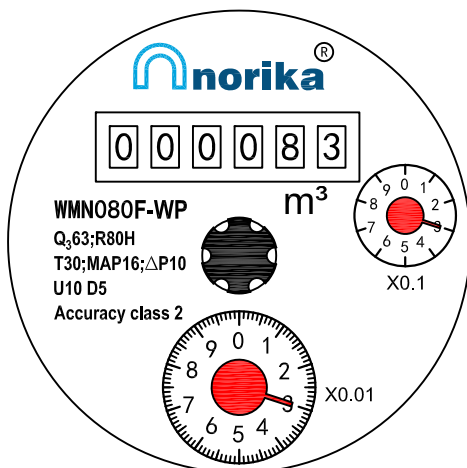
- \*1] Ensure water meter is installed in the correct water flow direction.
- 2] Always ensure to select the correct size and spec for the meter.
- 3] This meters can be installed in the horizontal, vertical and inclined position.
- 4] The height "G" is necessary for removing the measuring element.

# Water Meter Reading 水表读数

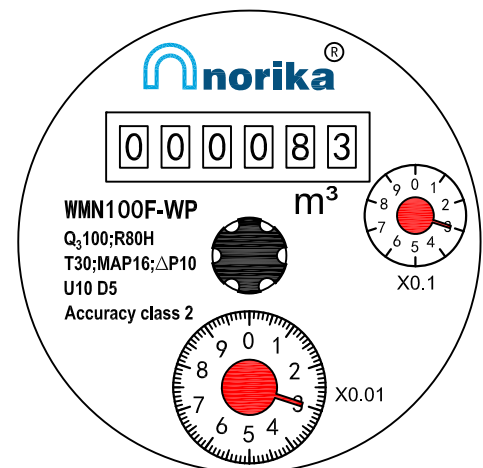
## WMN065F-WP



## WMN080F-WP



## WMN100F-WP



Water meter's Measuring unit is the cubic meter .(  $m^3$  )

Conversion formula is:  $1 m^3 = 1,000$  Litres

For example, Pic on the left, read as:

$83.33m^3$  OR 83,330 Litres

水表的计量单位为：立方米 ( $m^3$ )

换算公式为:1立方米=1000公升,

即：  $1m^3=1,000$  Litres

以图为例：

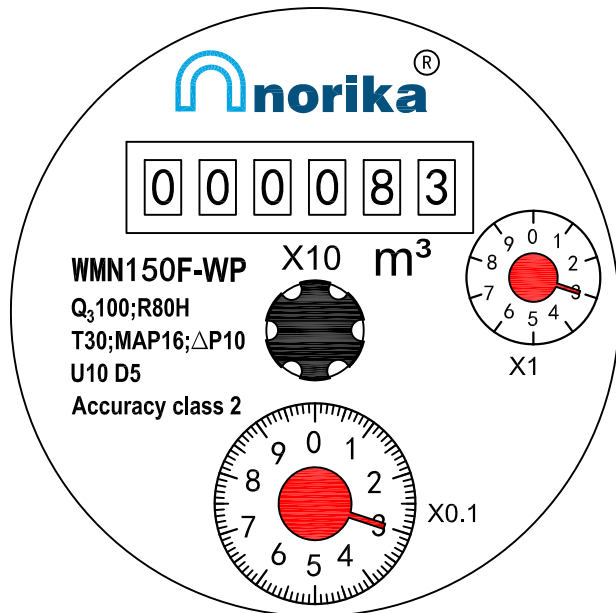
水表的读数为  $83.33m^3$

换算成公升为 83,330 Litres

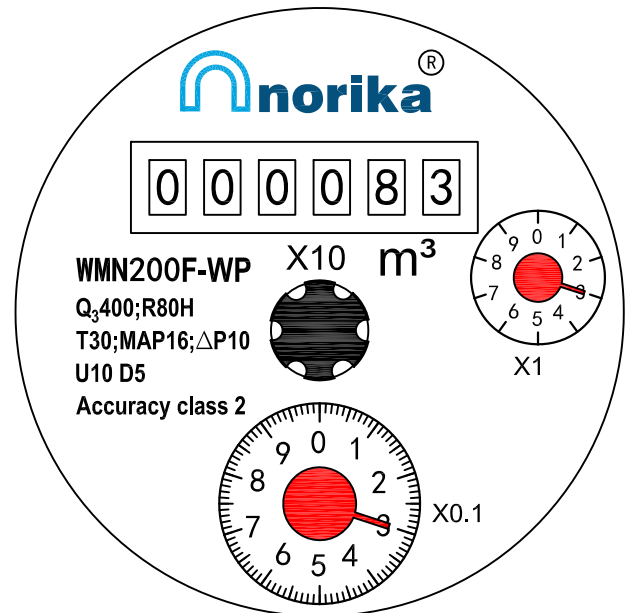
# Water Meter Reading

## 水表读数

### WMN150F-WP



### WMN200F-WP



Water meter's Measuring unit is the cubic meter .( m<sup>3</sup> )

Conversion formula is: 1 m<sup>3</sup> = 1,000 Litres

For example, Pic on the left, read as:

833.3m<sup>3</sup> OR 833,300 Litres

水表的计量单位为：立方米 (m<sup>3</sup>)

换算公式为:1立方米=1000公升,

即：1m<sup>3</sup>=1,000 Litres

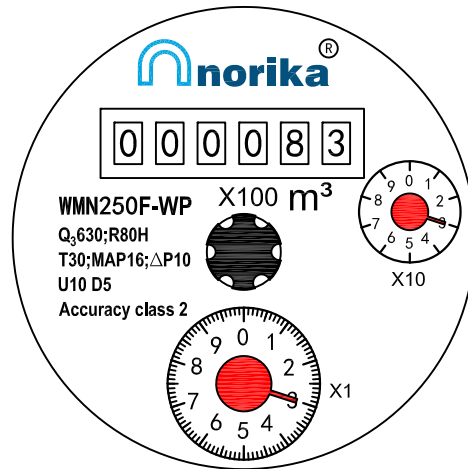
以图为例：

水表的读数为 833.3m<sup>3</sup>

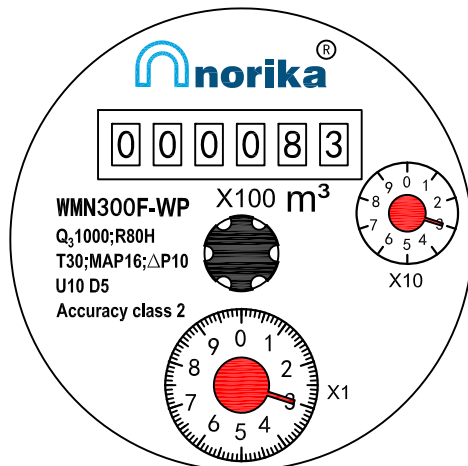
换算成公升为 833, 300 Litres

# Water Meter Reading 水表读数

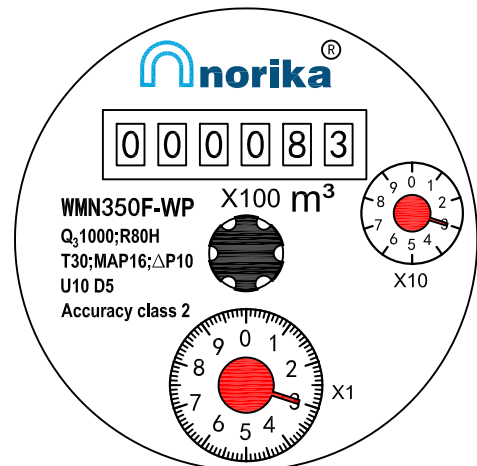
## WMN250F-WP



## WMN300F-WP



## WMN350F-WP



Water meter's Measuring unit is the cubic meter .( m<sup>3</sup> )

Conversion formula is: 1 m<sup>3</sup> = 1,000 Litres

For example, Pic on the left, read as:

8,333m<sup>3</sup> OR 8,333,000 Litres

水表的计量单位为：立方米 (m<sup>3</sup>)

换算公式为:1立方米=1000公升,

即： 1m<sup>3</sup>=1,000 Litres

以图为例：

水表的读数为 8,333m<sup>3</sup>

换算成公升为 8, 333, 000 Litres